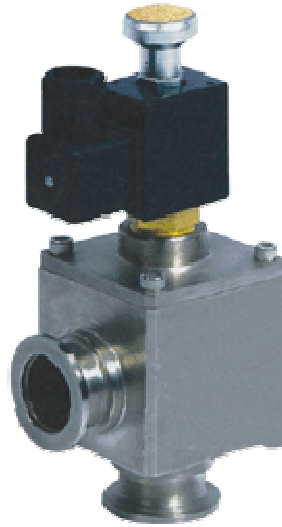


DYC-JQ



■ DYC-JQ 型—电磁真空带充气压差阀

- DYC-JQ 型电磁真空带充气压差阀是机械真空泵安全阀，安装于机械真空泵的进气口，并与泵同步开启和关闭。当泵停止工作或电源突然中断时，阀门利用大气压力使阀板自动关闭，使真空系统保持真空并将大气充入泵腔内，从而避免泵油逆向流动而污染真空系统。适用介质为纯净空气和非腐蚀性气体。

■ DYC-JQ

Electro-vacuum Differential Pressure Valve

- DYC-JQ electro-vacuum differential Pressure valve is a safely valve for mechanical vacuum pump. It is mounted at the intake nozzle of mechanical vacuum pump, synchronously opened and closed with the pump. In case that pump stops working or power supply is suddenly broken off, valve disc will be closed automatically under atmospheric pressure, to keep the vacuum system vacuum and the air charged into pump cavity, thus to prevent pump oil from reverse flow that can pollute the vacuum system. Applicable medium can be pure air or noncorrosive gases.

■ 电磁真空带充气压差阀主要技术性能

Main Technical Performance

适用范围: Applicability	$10^5 \sim 10^2 \text{Pa}$
阀门漏率: Valve Leak Rate	$\leq 1.3 \times 10^{-2} \text{Pa.L/S.}$
适用温度: Applicable Temperature	$-30 \sim +50^\circ\text{C}$
线圈温升: Coil Temperature Rise	$\leq 65^\circ\text{C}$
开闭时间: Open-close Time	$\leq 3\text{S}$
电源电压: Mains Voltage	220V/50Hz

上海立诺防腐阀门制造有限公司

电磁真空带充气压差阀

■ 电磁真空带充气压差阀主要零件材料

Materials of Main Parts

■ 阀体、阀盖、阀板：碳钢或铝合金

隔膜：丁腈橡胶加涤纶绸

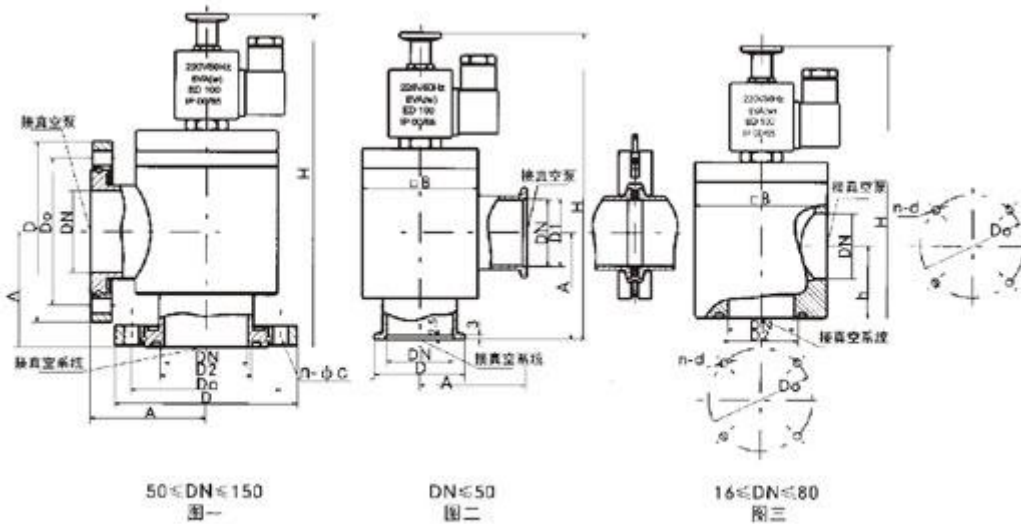
■ Body, bonnet and disc: carbon steel or aluminium alloy

Diaphragm: NBR and terylene silk

CONSTRUCTION FIGHTS (mm)

■ 电磁真空带充气压差阀外形及连接尺寸(mm)

Overall and Connection Dimensions(mm)



■ 活套法兰连接(GB6070 图一)

Model 型号	DN	Do	D	D2	n-φC	A	H
DYC-JQ50	50	90	110	55	4-φ9	70	203
DYC-JQ63	63	105	130	68	4-φ9	88	226
DYC-JQ80	80	125	145	85	8-φ9	98	260
DYC-JQ100	100	145	165	105	8-φ9	108	282
DYC-JQ160	160	200	225	165	8-φ12	158	350

■ 快卸法兰连接(GB4982 图二)

Model 型号	DN	D1	D	A	H	B
DYC-JQ16	16	17.2	30	40	160	55
DYC-JQ25	25	26.2	40	50	170	60
DYC-JQ32	32	34.2	55	58	179	60
DYC-JQ40	40	41.2	55	65	187	70
DYC-JQ50	50	52.2	75	70	203	85

■ 方体螺纹连接(JB919 图三)

Model 型号	DN	Do	D2	h	B	H	n-d
DYC-JQ16	16	42	22	28	48	148	4-M5
DYC-JQ25	25	55	29	35	58	155	4-M6
DYC-JQ32	32	64	36	40	68	160	4-M6
DYC-JQ40	40	70	44	44	80	166	4-M6
DYC-JQ50	50	90	55	56	94	189	4-M8
DYC-JQ65	65	105	70	65	115	205	4-M8
DYC-JQ80	80	125	85	75	140	250	4-M8